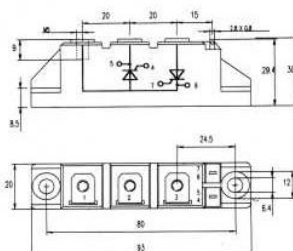


TIPOS TIPOS TYPES	CIRCUITO CIRCUITO CIRCUIT		V_{RRM}	I_{TRMS}	I_{TAV}	I_{TSM}	I^2t	$\left(\frac{dv}{dt}\right)_{cr}$	V_T, V_T	T_{vj}	$V_{T(TO)}$	r_T	I_H	I_L	V_{GT}	I_{GT}
			V_{DRM}	I_{FRMS}	I_{FAV}	$T_{vj}=25^\circ C$		$V/\mu s$	V_{T, V_T} max. (I_T, I_F) $T_{vj}=25^\circ C$	T_{vj} max.	$V_{T(TO)}$ max.	T_{vj} max.	I_H max.	I_L max.	$T_{vj}=25^\circ C$	
			V	A	A	A	A ² s								v	°C
CSST20B06			600					500								
CSST20B08			800					500								
CSST20B12			1200	40	18	320	510	1000	2,3	125	1,0	16	200	400	3	150
CSST20B14			1400		(85)			1000	(75A)							
CSST20B16			1600					1000								
CSST27B06	CSSH27/06		600					500								
CSST27B08	CSSH27/08		800					500								
CSST27B12	CSSH27/12		1200	50	25	470	1100	1000	1,8	125	0,9	12	200	400	3	150
CSST27B14	CSSH27/14		1400		(85)			1000	(75A)							
CSST27B16	CSSH27/16		1600					1000								
CSST42B04	CSSH42/04		400					500								
CSST42B06	CSSH42/06		600					500								
CSST42B08	CSSH42/08		800	75	40	1000	5000	500	1,95	125	1,0	4,5	250	600	3	150
CSST42B12	CSSH42/12		1200		(85)			1000	(200A)							
CSST42B14	CSSH42/14		1400					1000								
CSST42B16	CSSH42/16		1600					1000								
CSST57B06	CSSH57/06		400					500								
CSST57B08	CSSH57/08		600					500								
CSST57B12	CSSH57/12		800					500								
CSST57B14	CSSH57/14		1200	95	55	1500	11000	1000	1,65	125	0,9	3,5	250	600	3	150
CSST57B16	CSSH57/16		1400		(80)			1000	(200A)							
CSST57B18	CSSH57/18		1600					1000								
CSST57B20	CSSH57/20		1800					1000								
CSST57B20	CSSH57/20		2000					1000								
CSST72B06	CSSH72/06		400					500								
CSST72B08	CSSH72/08		600					500								
CSST72B12	CSSH72/12		800					500								
CSST72B12	CSSH72/12		1200	125	70	1600	13000	1000	1,90	125	0,9	3,5	250	600	3	150
CSST72B14	CSSH72/14		1400		(85)			1000	(300A)							
CSST72B16	CSSH72/16		1600					1000								
CSST72B18	CSSH72/18		1800					1000								
CSST72B20	CSSH72/20		2000					1000								
CSST92B06	CSSH92/06		400					500								
CSST92B06	CSSH92/06		600					500								
CSST92B08	CSSH92/08		800	150	90	2000	20000	500	1,65	125	0,9	2,0	250	600	3	150
CSST92B12	CSSH92/12		1200		(85)			1000	(300A)							
CSST92B14	CSSH92/14		1400					1000								
CSST92B16	CSSH92/16		1600					1000								
CSST106B08	CSSH106/08		600					500								
CSST106B08	CSSH106/08		800					500								
CSST106B12	CSSH106/12		1200	180	106	2250	25000	1000	1,65	125	0,9	2,0	250	600	3	150
CSST106B14	CSSH106/14		1400		(85)			1000	(300A)							
CSST106B16	CSSH106/16		1600					1000								

CSST20B...CSSH106.

peso/weight: 120g



MODULOS COM DIODOS
E TIRISTOR, BASE ISOLADA

MODULOS COM DIODOS
Y TIRISTOR, BASE AISLADA

TIPOS TIPOS TYPES	CIRCUITO CIRCUITO CIRCUIT		V_{RRM} V_{DRM}	I_{FRMS} I_{FRMS}	I_{TAV} I_{FAV} ($T_{case}=25^{\circ}C$)	I_{TSM} $T_{vj}=25^{\circ}C$ 10ms	I^2t kA ² s	$\left(\frac{dv}{dt}\right)_{cr}$ V/us	V_T, V_F max. (I_T, I_F) $T_{vj}=25^{\circ}C$	T_{vj} max.	$V_{T(TO)}$ $V_{(TO)}$ $T_{vj}max.$	r_T	I_H max.	I_L max.	V_{GT}	I_{GT} $T_{vj}=25^{\circ}C$
	◆novo/nuevo/new	CSST	CSSH	V	A	A	kA	kA ² s	V/us	V	°C	V		mA	mA	
CSST132/08	CSSH132/08		800					500								
CSST132/12	CSSH132/12		1200					1000								
CSST132/14	CSSH132/14		1400	220	130	4,7	110	1000	1,8	125	1,0	1,6	400	400	2	200
CSST132/16	CSSH132/16		1600		(87)			1000	(500A)							
◆CSST132/18	CSSH132/18		1800					1000								
◆CSST132/20			2000					1000								
◆CSST132/22			2200					1000								
CSST162/08	CSSH162/08		800					500								
CSST162/12	CSSH162/12		1200					1000								
CSST162/14	CSSH162/14		1400	250	130	5,4	145	1000	1,6	125	0,85	1,5	400	100	2	200
CSST162/16	CSSH162/16		1600		(83)			1000	(500A)							
◆CSST162/18	CSSH162/18		1800					1000								
CSST210/08			800					500								
CSST210/12			1200					1000								
CSST210/14			1400					1000								
CSST210/16			1600	350	210	8,5	361	1000	1,5	130	0,95	0,60	500	200	3	200
◆CSST210/18			1800		(80)			1000	(500A)							
◆CSST210/20			2000					1000								
◆CSST210/22			2200					1000								
CSST250/08	CSSH250/08		800					500								
CSST250/12	CSSH250/12		1200					1000								
CSST250/14	CSSH250/14		1400	420	210	9,0	405	1000	1,5	130	0,93	0,45	500	200	3	200
CSST250/16	CSSH250/16		1600		(80)			1000	(500A)							
◆CSST250/18	CSSH250/18		1800					1000								
CSST213/08			800					500								
CSST213/12			1200					1000								
CSST213/14			1400	370	213	8,5	361	1000	1,9	130	0,95	1,3	500	200	3	200
CSST213/16			1600		(80)			1000	(500A)							
◆CSST213/18			1800					1000								
CSST253/08			800					500								
CSST253/12			1200					1000								
CSST253/14			1400	420	253	9,0	405	1000	1,7	130	0,85	1,1	500	200	3	200
CSST253/16			1600		(80)			1000	(750A)							
◆CSST253/18			1800					1000								
CSST253/12			1200					500								
CSST253/14			1400					1000								
CSST253/16			1600	600	330	9,0	405	1000	2,05	130	1,2	0,55	500	200	3	200
◆CSST253/18			1800		(78)			1000	(1500A)							
◆CSST330/20			2000					1000								
◆CSST330/22			2200					1000								
CSST400/12			1200					1000								
CSST400/14			1400	700	400	14,0	980	1000	1,7	130	0,92	0,3	500	200	3	200
CSST400/16			1600		(84)			1000	(2400A)							